



MUNICIPALITIES ON THE COSTA BLANCA SEATRADE 2025

ASOCIACIÓN ALICANTE COSTA BLANCA TURISMO Y CRUCEROS

ALICANTE COSTA BLANCA



To:

ALCOY

ALICANTE

PETRER

CAMPELLO

ALTEA

ELCHE

VILLAJOYOSA

NOVELDA

ONIL

SAN VICENTE DEL RASPEIG





ALCOY

Alcoy is one of the most important municipalities in the province of Alicante. Historically very relevant after the Industrial Revolution in the textile, metallurgical and paper industry sectors.



SOME OF THE MAIN HIGHLIGHTS ARE:

The bridges of María Cristina, Sant Jordi and the Canalejas Viaduct.

The MAF, Alcoy Museum of the Fiesta; the MuBoma, Provincial Museum of Firefighters or the Explora e Isurus, expomuseum of the city and exhibition of paleontology.

The Chapel of San Miguel, the church of San Mauro and Sant Jordi or the church of Santa María.

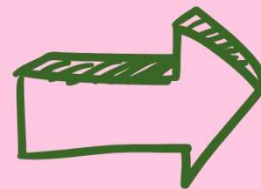
The Albors Palace, the town hall or the medieval walls.





PETRER

Petrer has a long industrial tradition centered on the manufacture of footwear in leather goods shops, as well as the production of wines and sparkling wines, historical, and nature tourism.



SOME OF THE MAIN HIGHLIGHTS ARE:

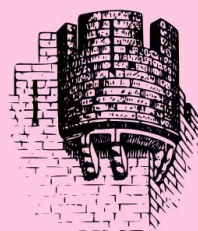
Monuments like the Petrer Castle, The cave houses and the San Rafael aqueduct.

The Dámaso Navarro Museum, dedicated to archaeology and ethnology of the municipality.

More than 30 routes and trails, and the Arenal de l'Almorxó Municipal Natural Park, an important dune formation covering more than 50 hectares, notable for its geological and biological uniqueness.

Enjoy its most representative festivals, such as the Moors and Christians, the patron saint festivities, or the Holy Cross.

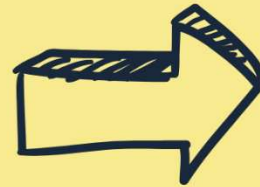






ALTEA

In 2019, it held the official title of Cultural Capital of the Community. The economy was based on agriculture and fishing, but it experienced a significant increase in both domestic and international tourism.



SOME OF THE MAIN HIGHLIGHTS ARE:

Its coves and beaches such as Cap Blanc, Cap Negret, La Roda, and Cala Solo.

Its old town with white houses and cobbled streets.

Viewpoints such as Cronistas de España and Mirador Blanco, where you can enjoy panoramic views of the sea.

The Serra Gelada and Sierra de Bernia Natural Park, where you can practice water sports such as sailing, diving, kayaking, and scuba diving.

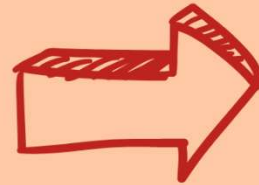






VILLAJOYOSA

Villajoyosa is a municipality located in the Marina Baja region, of which it is the capital. It has a long fishing tradition, and its economy currently stands out for its chocolate industry and tourism.



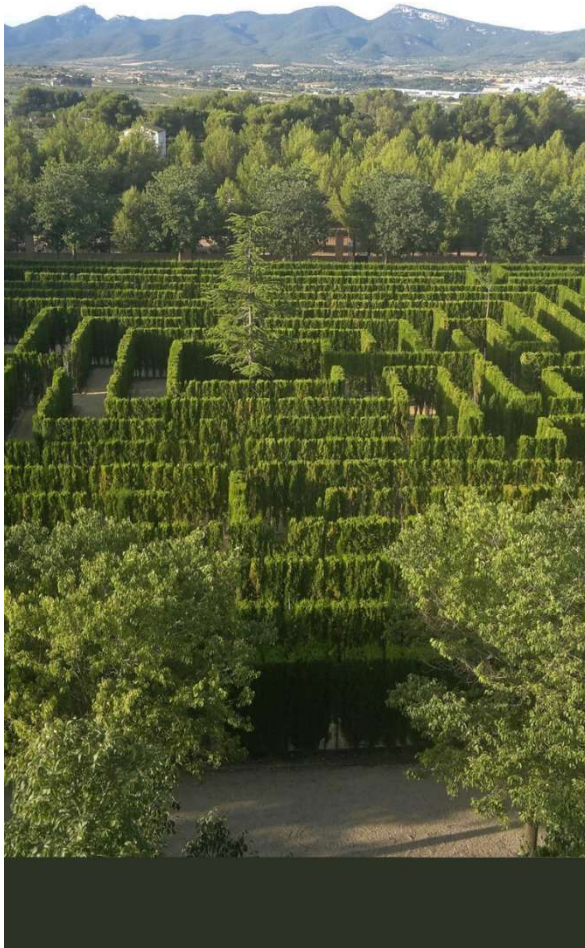
SOME OF THE MAIN HIGHLIGHTS ARE:

Its beaches, such as Centro, Paraíso, and Bol Nou.

Its museums, such as those dedicated to chocolate: Chocolates Pérez, Valor, and Clavileño.

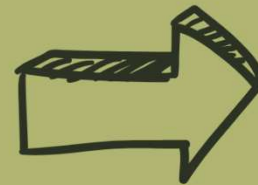
Its monuments, such as the anti-pirate defense towers and the archaeological site of the Roman municipality of Allon.





ONIL

Onil is a municipality located in L'Alcoià region, in the north of the province. Known as the cradle of dolls due to its historic toy industry, it also stands out for its impressive heritage and natural spaces.



SOME OF THE MAIN HIGHLIGHTS ARE:

Its museum such as the Doll Museum, where visitors can explore the centuries-old tradition of doll making.

Its historical monuments, like the Palace-Fortress of the Marquis of Dos Aguas and the Convent of San Buenaventura.

Its natural spaces, such as Pouet de la Neu and Casa Tápena perfect for enjoying nature.

Onil is an ideal option for unique excursions, combining history, local culture, and authentic experiences in a privileged natural setting.







ALICANTE

Alicante is a port city on the Mediterranean coast and the capital of its namesake province. Known for its pleasant climate, rich cuisine and lively cultural life, it's one of the most attractive destinations in the Community.



SOME OF THE MAIN HIGHLIGHTS ARE:

Santa Bárbara Castle, a majestic fortress atop Mount Benacantil offering panoramic views.

The Explanada de España and Postiguet Beach, perfect for a stroll or a relaxing moment by the sea.

Museums like MACA (Museum of Contemporary Art) and MARQ (Archaeological Museum) awarded at European level.

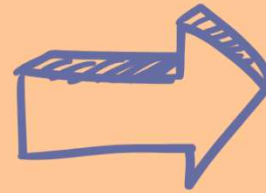
Alicante is an ideal stop for cruise passengers looking for a complete experience of history, sea and culture just a few steps from the ship.



CAMPELLO



El Campello is a charming coastal town in the province just 13 km from the capital. It offers a mix of fine sandy beaches, natural coves and a rich historical and fishing heritage that makes it a perfect destination for visitors seeking relaxation.



SOME OF THE MAIN HIGHLIGHTS ARE:

La Illeta dels Banyets, an archaeological site by the sea with Iberian Roman, and Arab remains.

The Fishing and Marina Port, perfect for enjoying the fish market, local cuisine, and seafront promenade.

Beaches like Muchavista and Carrer la Mar, spacious, accessible and well-equipped. La Illeta Watchtower, a 16th-century coastal defense tower and a symbol of the town.

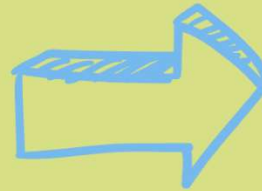
El Campello is a great excursion for cruise passengers looking to discover a coastal spot full of history, tradition and stunning landscapes.





ELCHE

Elche is a historical city in the south. Famous for its stunning Palm Grove, a UNESCO World Heritage Site. Its unique blend of Arab and Mediterranean culture, combined with living traditions. A must-visit destination for those seeking authenticity and history.



SOME OF THE MAIN HIGHLIGHTS ARE:

The Palm Grove, a vast forest of over 200.000 palm trees surrounding the city with scenic walking routes.

The Basilica of Santa María, home to the Misteri d'Elx, a UNESCO-recognized sacred drama held every August.

MAHE (Museum of Archaeology and History of Elche), featuring Iberian, Roman, and medieval artifacts.

Huerto del Cura, a botanical garden with exotic plants and the iconic Imperial Palm.

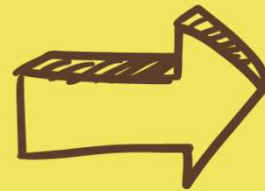
Elche is an ideal cultural day trip for cruise passengers eager to explore history, art, and deep Mediterranean roots under 30min from Alicante.





NOVELDA

Novelda is a modernist gem nestled in the heart of the Vinalopó region. Known for its unique architecture, marble industry and spice heritage, it offers an authentic experience rich in history, and art in the Mediterranean.



SOME OF THE MAIN HIGHLIGHTS ARE:

The Sanctuary of Santa María Magdalena, a modernist masterpiece inspired by Gaudí, set in a striking natural landscape.

La Mola Castle, featuring a rare triangular tower and offering panoramic views of the valley.

Gómez-Tortosa Cultural Center, an elegant modernist building hosting exhibitions and cultural events.

Wineries and wine routes, where visitors can enjoy traditional Monastrell wines in a charming rural setting.

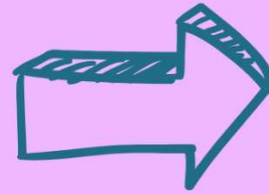
Novelda is a perfect cultural day trip to explore inland Alicante, blending art, nature, and tradition 30 min from the port of Alicante.





BENIDORM

Benidorm is one of the most iconic destinations on the Mediterranean. Famous for the skyline by the sea, endless beaches, and year-round energy, Benidorm blends modernity, nature, and tradition in a one-of-a-kind experience.



SOME OF THE MAIN HIGHLIGHTS ARE:

Levante and Poniente beaches, both Blue Flag awarded-perfect for relaxing or enjoying water sports.

La Cruz viewpoint and Serra Gelada Natural Park, offering scenic hiking routes with breathtaking coastal views.

The Old Town, with charming streets, traditional tapas bars, and the iconic Balcony of the Mediterranean. Theme parks like Terra Mítica, Aqualandia or Mundomar.

A packed cultural and leisure calendar full of festivities.

Benidorm is a perfect day trip for cruise passengers looking for sun and entertainment 40 min from Alicante.





SAN VICENTE DEL RASPEIG

San Vicente del Raspeig is a vibrant and welcoming town next to Alicante, known for its lively university, festive traditions, great connections to coast and inland. It blends history, culture and leisure making it an ideal spot for residents and visitors alike.



SOME OF THE MAIN HIGHLIGHTS ARE:

University of Alicante, a modern campus surrounded by green spaces and hosting a lively cultural agenda open to the public.

Moors and Christians Festival, declared of Provincial Tourist Interest, filling the streets with music, colour and tradition.

Historic Town Centre, with the Church of San Vicente Ferrer, charming squares, and traditional cuisine. Parks and green areas like Lo Torrent, perfect for walks, outdoor activities and events.

Located just 30 min by tram from Alicante, it's perfect to explore the surroundings of the coast.







MUNICIPALITIES ON THE COSTA BLANCA SEATRADE 2025

ASOCIACIÓN ALICANTE COSTA BLANCA TURISMO Y CRUCEROS

ALICANTE COSTA BLANCA



To:

ALCOY

ALICANTE

PETRER

CAMPELLO

ALTEA

ELCHE

VILLAJOSYOSA

NOVELDA

ONIL

SAN VICENTE DEL RASPEIG

